

# The Chorley Partnership

Chorley Council

Task & Finish Group

Presentation by  
Lesley-Ann Fenton

1<sup>st</sup> October 2008



## What is a Local Strategic Partnership?

- A body that brings together the public, private and 3<sup>rd</sup> sectors to agree and deliver the long term vision and priorities for an area “The Sustainable Community Strategy”
- Partners working together to deliver services more effectively at a local level on “cross cutting” issues
- Led by the local authority

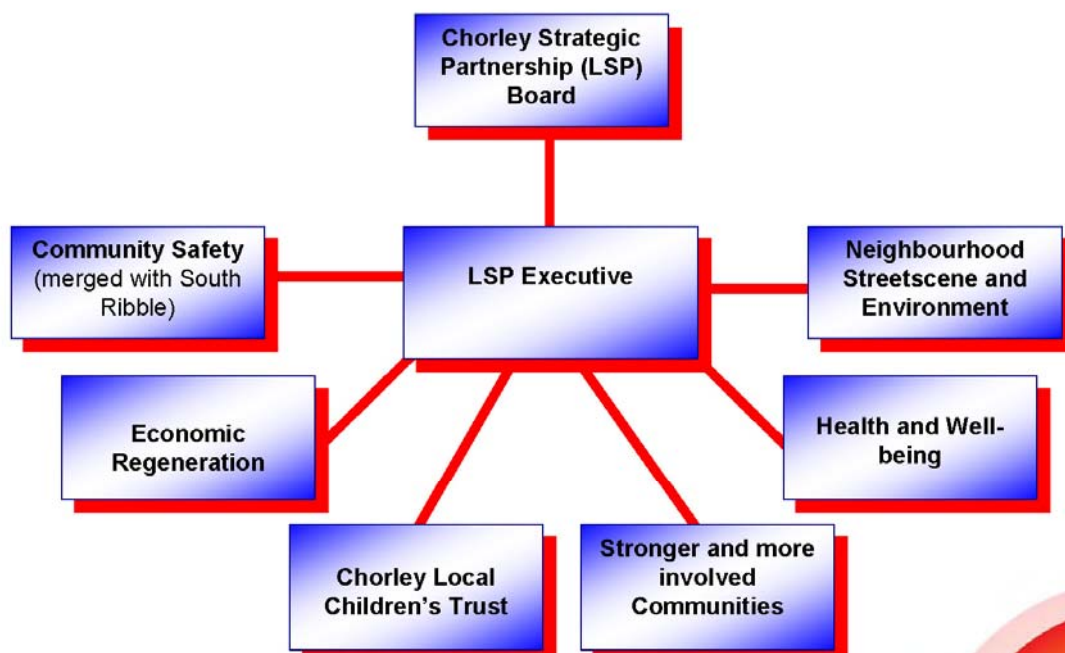
# Membership of the LSP

- Not a statutory requirement but all areas now have an LSP
- “Duty to Co-operate” partners outlined in the White Paper include:
  - Councils
  - PCTs & other local NHS eg. Hospital Trust
  - Police
  - Fire Service
  - LSC (Further education providers eg. Runshaw)
  - Central Government - DWP (Job Centre +), GONW
  - Private Sector representatives
  - 3<sup>rd</sup> Sector representatives

TITLE OF PRESENTATION IN HERE

**Chorley**  
Partnership

# The Structure of the LSP



**Chorley**  
Partnership

# Recent changes made to the LSP

- Restructured & new constitution
- Refreshed membership – VCFS elections onto Board, new Chair
- Performance management framework in place
- Communications Plan
- Council committed on-going funding
- Increased role in LAA negotiations

## The Sustainable Community Strategy

- 20 Year Vision for the future
- Responsibility of the LSP to agree and publish (led by the local authority)
- Evidence based:
  - Consultation with local people
  - Statistics on the area
  - Latest performance data across the LSP
- Identifies the key priorities for an area.



# The Local Area Agreement

- County-wide agreement between the Lancashire Partnership and DCLG
- 35 of the National Indicators that best reflect the priorities of Lancashire
  - Reducing the inequality gap – income and health
  - Tackling climate change
  - Community cohesion
- 12 District LSPs deliver the LAA on a local level
- Performance Reward Grant



Chorley  
Partnership

## 2007/8 Projects



### **Reducing Teenage Pregnancy in Chorley** (*The Children & Young People's Theme Group*)

- **70% increase** in young people attending the 'Wise-up' service over one year.
- More staff trained to give sexual health advice to young people in Chorley – youth workers, teachers
- Sexual health outreach workers now appointed in Chorley Young People's Service, to target hotspot areas
- Young mum's peer group to teach young people of the harsh realities of becoming a parent

FUNDING: £10,000 Chorley Partnership + £95,000  
Teenage Pregnancy Board **TOTAL £105,000**



Chorley  
Partnership

## **Multi Agency Tasking and Co-Ordination (MATAC) (Community Safety Partnership)**

### **Key elements of MATAC:**



- 25 permanent members of MATAC, with further 10 members whose skills are called upon when needed
- Police, Fire and Environmental data fed into GIS system
- This produces a map of hotspot areas, allowing partners to more effectively deploy resources

### **Overall: A big success**

- Crime down dramatically – 26% in 4 years!
- Commendation from Home Office
- Now mainstreamed as day-to-day business
- Partnership Analyst now employed within the Police to maintain process

FUNDING: £10,000 Chorley Partnership + £6750  
Safer Stronger Communities CDRP funding  
**TOTAL £16,750**



**Chorley**  
Partnership

## **Marketing Chorley (Economic Regeneration Partnership)**



- Revolution had its official launch
- Consultation carried out on the re-vamp of the town centre
- Chorley Markets have undergone further promotion – Town Centre manager appointed
- Chorley now clearly visible at exhibitions nationally – new stands, and marketing material
- Business section of Chorley council website updated – this content will make up the business investment packs

FUNDING: £10,000 Chorley Partnership + £40,000  
Helio Slough (printing in kind) **TOTAL £50,000**



**Chorley**  
Partnership

## **First Steps** (*Neighbourhood, Environment & Streetscene*)



- 2 sites identified for environmental improvement:
  - Village Centre Clayton Brook
  - Laburnham Road – pond area & installation of paths and benches
- Funding issues have delayed the delivery of the project
- Community clean-up day 13<sup>th</sup> June started the physical aspect of the project
- £16,000 secured from the Lancashire Small Sites Reclamation fund plus a further £5,000 from Chorley Council
- Decision now made to go ahead with the money we have, but scale back the project slightly

FUNDING: £5,000 Chorley Partnership + £5,000  
Chorley Council + £16,000 LCC **TOTAL £26,000**



Chorley  
Partnership

## **Building a Chorley Community Network** (*Stronger and More Involved Communities theme group*)



- Over 130 3<sup>rd</sup> sector organisations have signed up to the Chorley Community Network database, which this year will be made publicly accessible on a website
- 100 new volunteering opportunities now being shown on the volunteer centre database
- 21 volunteers already referred to these
- Additional publicity generated
- Event planned to promote the existence of the network

FUNDING: £10,000 Chorley Partnership **TOTAL  
£10,000**

YEAR 2 £5,000 Chorley Partnership + £5,000 NHS  
Central Lancashire **TOTAL £10,000**



Chorley  
Partnership



## **The Families First project (Chorley & South Ribble LSPs)**

### **What is it?**

An innovative project aimed at reducing the burden some families place on their neighbourhoods and public services in terms of anti-social behaviour, criminality, multiple health & welfare issues, rent arrears, and other compounding problems.

### **Current Status**

Funding from both LSPs, Police and PCT secured

NCH have now been appointed as project co-ordinators

Agreement to use CAF as a selection process

2 families in Chorley currently being worked with by 1 lead professional who acts as their main contact for all agencies currently involved with



### **Next Steps**

- A performance management framework is being drawn up to monitor the success of intervention on each family
- Lead professionals for each of the families need to be identified
- Action plans need to be drawn up for these families and family targets agreed



**Chorley**  
Partnership

## **Areas of strength**

- IDeA Peer Review (2007) outlined the areas where the LSP currently performs strongly:
  - Ambitious focused Partnership
  - Good relationships between key partners e.g Police & PCT
  - Significant contribution from private sector
  - VCFS engagement is strong
  - This commitment is demonstrated by partners investing in LSP projects (£285k last year, £362k this year)



**Chorley**  
Partnership

- Economic Development
  - Pilot employment Charter
  - Revolution site
- Children & Young People
  - Children's Trust £98k p.a. funding
  - Targeted teenage pregnancy projects
  - Improving the Youth Offer – working with LCC and the police
- Huge crime reduction working through MATAC – 26% in 4 years
- Climate Change Strategy

## Areas for improvement

IDeA Peer Review (2007) areas for consideration:

- Invest in the Partnerships Capacity
- Work towards aligning main stream budgets and where appropriate pool budgets
- Partners need to take responsibility for being pro-active
- Spend time developing awareness of the challenges and opportunities for the Partnership
- Develop the Chorley brand and promote the work of the Partnership further
- Develop the role of O&S in relation to the LSP.  
However it needs to be focused and not simply add a further layer of performance monitoring



# Areas for improvement

- Alcohol related harm (Chorley 2<sup>nd</sup> highest in Lancashire)
- Affordable housing
- Teenage pregnancy still high
- Embedding performance management throughout the LSP
- Project identification and funding allocation

## Looking Ahead – 2008/9

- 11 projects selected, covering all 5 key priorities in the Sustainable Community Strategy:
  - Girls Aloud
  - Circle of Need (Older People's benefit take up)
  - Climate Change launch & business workshops
  - Family Support – Homestart
  - Alcohol consequences campaign
  - Time Banks volunteering project
  - Chorley Community Network website
  - Supporting rural economic diversification
  - Weeks of Action
  - Promoting awareness of mental health
  - Marketing Chorley phase 2